

# The Bird & the Whale



THEBIRDANDTHEWHALE.COM  
CAROL@PAPERPANTHER.IE



# THE BIRD & THE WHALE

*Written & Directed By:*

*Produced By:*

*Production Company:*

*Composer:*

*Language:*

*Running Time:*

*Technical Info:*

*Sound:*

*Screening formats available:*

*Screener:*

*Request Password:*

*Trailer:*

*Full EPK package:*

**Carol Freeman**

**Jonathan Clarke**

**Paper Panther**

**Chris McLoughlin**

**Non-Dialogue**

**7 minutes**

**Picture: 16:9 HD 24 FPS**

**(Colour)**

**5.1 Audio / Stereo**

**ProRes444**

**DCP**

**Blu-Ray**

**<https://vimeo.com/251346715>**

**[hallo@paperpanther.ie](mailto:hallo@paperpanther.ie)**

**<https://vimeo.com/173837291>**

**<https://goo.gl/ZCMVkn>**



## LOGLINE

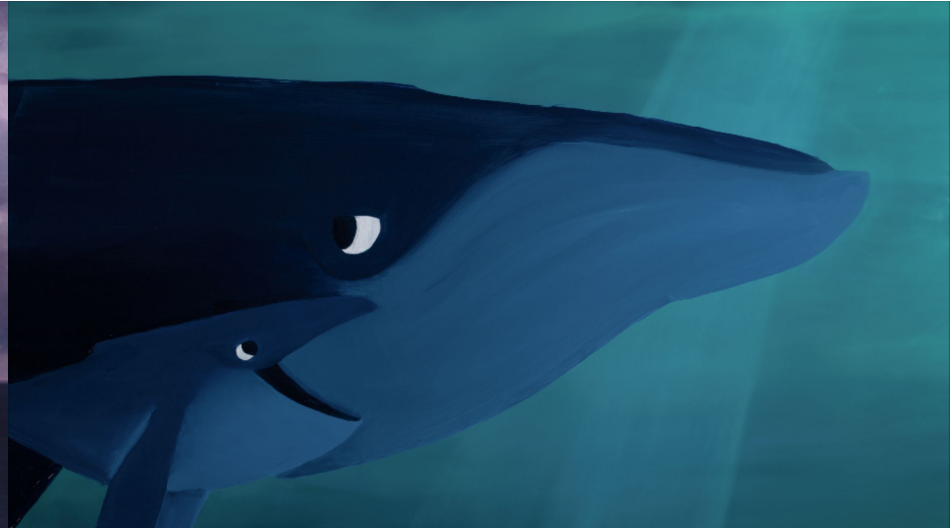
A young whale separated from his family discovers a caged bird, the sole survivor of a shipwreck. Together they struggle to survive lost at sea.

## SYNOPSIS

The Bird and the Whale is a story about a young whale struggling to find his voice. After straying too far from his family to explore a shipwreck, he discovers it's sole survivor, a caged songbird. Together they struggle to survive lost at sea.

The Bird & the Whale was created using a near obsolete form of animation – paint-on-glass. It was created in Dublin, Ireland by a small majority female team. On June 21<sup>st</sup> 2018, Carol was awarded a *Silver Screen* award at the *Young Director Awards* at the *Cannes Lions International Festival of Creativity*.





# PAINT-ON-GLASS

The Bird and the Whale was created using a technique called paint-on-glass animation. Each frame is painted with slow drying oil paint and shot with a top-down camera in a light controlled room. After a frame is shot, the paint is wiped away and the next frame is repainted almost entirely from scratch. Each new frame created, destroys the last.

The full 7 minutes of animation is made up of over 4300, 24 x 34 inch paintings and took over 14 months to paint.







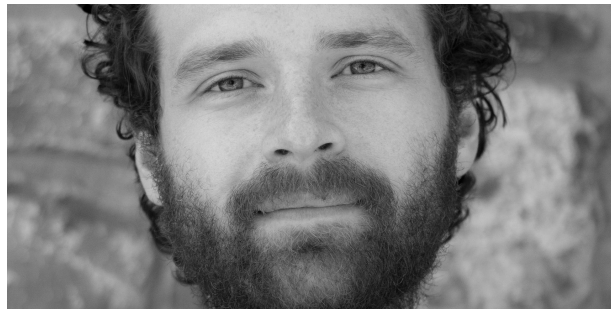
## DIRECTOR CAROL FREEMAN

Carol graduated from the National Film School of Ireland in 2009 with a focus on experimental animation. Since then she has worked on various films, commercials, illustrating picturebooks and teaching workshops around Ireland and abroad. In 2014 she co-founded Paper Panther Productions with the aim of creating new and innovative work in stop-motion and illustration.



## PRODUCER JONATHAN CLARKE

Jonathan is a Production and Development Executive. Having worked as a production manager and development producer across a range of IP and client work at Academy Award-nominated Cartoon Saloon, he is currently Head of Production for Giant Animation. Short film credits include Somewhere Down the Line (2014) and The Overcoat (2018)



## COMPOSER CHRIS MCLOUGHLIN

Chris is a Dublin based composer, working in a broad range of musical styles - from solo piano and hybrid orchestral arrangements, to glitched-out chiptunes. He has written for award winning theatre shows, games and animation.







# PAPER PANTHER

Paper Panther are an award winning Irish animation company who combine animation and education to create stories that resonate. Founded in 2014 by Carol Freeman, Pádraig Fagan and Eimhin McNamara, they are known for their unique aesthetic and unusual use of materials.

Working in a variety of stopmotion techniques, they create work for film, television and advertising as well as teaching workshops at home and abroad.





# CREDITS

**Written & Directed by**

Carol Freeman

**Original Music by**

Chris McLoughlin

**Produced by**

Jonathan Clarke

**Paint-on-Glass**

Carol Freeman  
Ciara Nolan  
Caitlyn Rooke  
Svetlana Sobcenko  
Katie Sherlock  
Kristina Yee  
Chris McLoughlin

**Animation & Technical  
Supervisor**

Eimhin McNamara

**2D Animation**

Manuel Galiana  
Santiago Lopez Jover  
Kenneth Ladekjaer  
Anne Lou Erambert  
Alessandra Sorrentino  
Eimhin McNamara  
Ciara Nolan

**Post Production  
Supervisor**

Chris McLoughlin

**Compositing**

Carol Freeman  
Katie Sherlock  
Ciara Nolan  
Eimhin McNamara

**Colourist**

Matt Branton

**Post Production  
Facility**

Windmill Lane

**Post Production Sound  
Facilities**

Paul Lynch - Studio 4

**Executive Producer for  
the Irish Film Board**

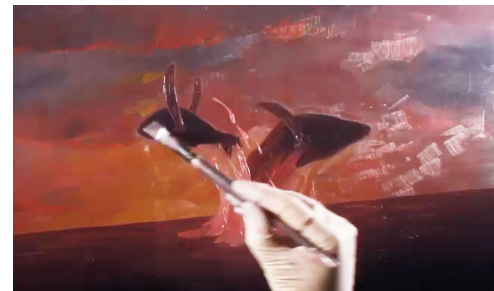
Emma Scott

**Executive Producer for RTÉ**

Pauline McNamara

**Shorts Co-ordinator for  
the Irish Film Board**

Jill McGregor





A person with long brown hair, seen from behind, is painting a large, vibrant abstract artwork on a canvas. The artwork features bold, expressive brushstrokes in shades of green, blue, and white, creating a sense of movement and depth. The artist is wearing a white glove on their right hand and is using a paintbrush to apply paint to the canvas. The workshop is cluttered with various art supplies, including paint tubes, brushes, and a palette, and is lit by a bright light source on the left.

# CONTACT

Carol Freeman  
[carol@paperpanther](mailto:carol@paperpanther)

Paper Panther Productions  
A4 Sounds  
Saint Joseph's Parade  
Dublin 7  
Ireland  
+353 86 159 1541

[thebirdandthewhale.com](http://thebirdandthewhale.com)